

LucidShape Application: Test Tables II

Overview

An engineer wanted to optimize an automotive lighting design setup. The engineer compared the light distributions from different parameter settings and noted that it was complicated to find exactly the same measurement points on different sensor diagrams for analysis. The engineer chose to display measurement points and list the results manually.

The Challenge

- ▶ It was time consuming to convert the results of sensor diagrams for evaluation
- ▶ The procedure to find the exact same position of each sensor diagram was complicated and not automated

The Solution

LucidShape[®] custom test tables include the following features:

- ▶ Editable measurement points and areas
- ▶ Test points and areas are displayed directly into the light distribution measurement result
- ▶ Max and min value ranges
- ▶ Color-coded test points and areas to assist with analysis

LucidShape test tables enable fast evaluation and convenient comparisons of multiple sensor diagrams.

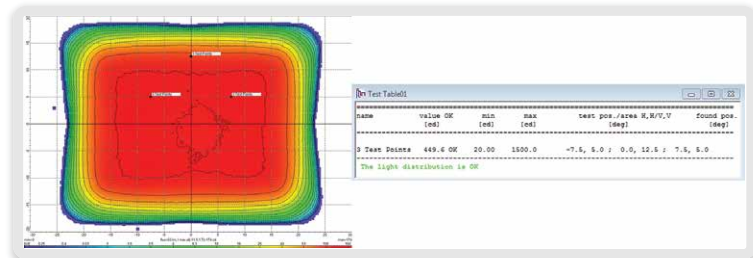


Figure 1. Sensor diagram and test table. Three fixed measurement points were included into the diagram. The user defined the position of each test point and min and max values. LucidShape evaluated the results automatically.

For more information, please contact Synopsys' Optical Solutions Group at (626) 795-9101, visit <https://www.synopsys.com/optical-solutions/lucidshape.html>, or send an e-mail to lucidshapeinfo@synopsys.com.