

Simpleware Software Release S-2021.06 Highlights of New Features

New Features

- 4D image support* including import, segmentation and landmarking, cine modes
- 3D printing toolkit includes tools for preparation, analysis, inspection, and export
- New surface export formats
- User-defined keyboard shortcuts

Improvements

- Enhanced PACS communication*
- Split regions tool now includes presets for different anatomies
- Speed improvements in the most commonly used tools
- Background volume rendering including masking options

* Features available in Simpleware ScanIP Medical only

Overview

Version S-2021.06 significantly enhances Simpleware software's ease-of-use and reliability as a comprehensive solution for all your 3D image processing and analysis workflows.

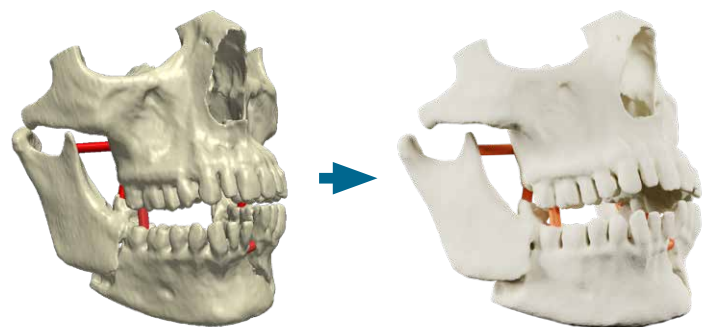
Faster Processing

Based on our customer feedback, we have improved the speed of the most commonly used tools, including:

- 10x – 100x speed up for centerlines statistics
- Up to 10x speed up for 2D slice contour visualization
- Up to 8x speed up for Morphological tools
- Simple 3D editing - now almost instant!

Easier to Use

- New support for 4D image data* controlled through the new 4D frame toolbox
- New user-defined keyboard shortcuts can speed up common or repetitive workflows
- The Split regions tool has a simpler interface and now includes presets for selected human anatomies
- New background volume rendering includes new masking options so you view only regions of interest
- New 3D printing toolkit to create accurate and print-ready models



New 4D Image Support*

- Import 4D image data in a range of formats
- Control and compare frames using the 4D frame toolbox
- Perform automatic segmentation and landmarking in 4D
- Cine modes for 2D slice views and 3D rendering (background, masks, surfaces, models)

Enhanced PACS*

- Two-way PACS communication – quickly and effectively manage your patient information
- Access patient information, image data and models
- Use DICOM encapsulated formats to store patient-specific models (*.stl format) in your PACS system

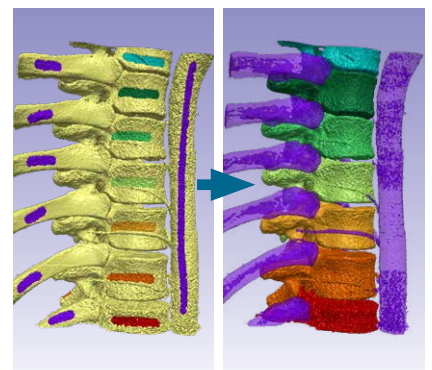
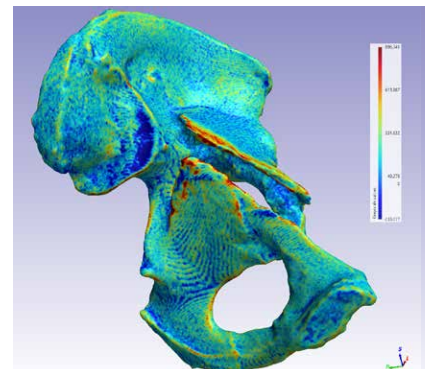
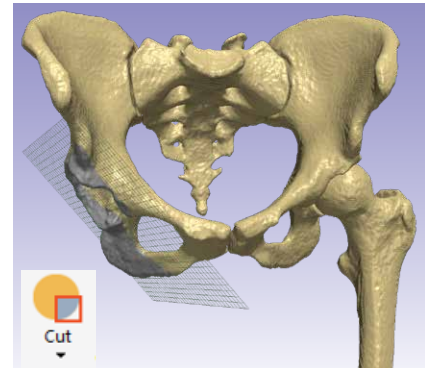
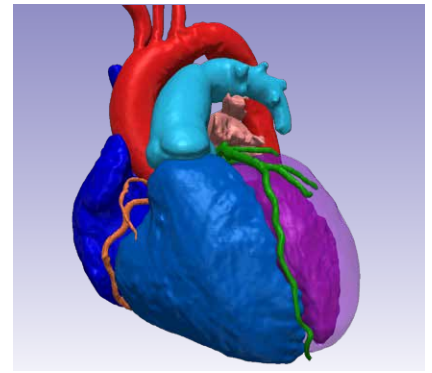
3D Printing Toolkit

- Generate accurate models suitable for 3D printing using image data and CAD objects (implants, stents etc.)
- Prepare your model using dedicated tools including:
 - Cut: cut a surface, remove unwanted details
 - Hollow: convert a solid object into a hollow one
 - Emboss text: add unique identifiers or part numbers to your model (Emboss or Deboss modes)
 - Connectors: add supporting or locator posts for multi-part or thin wall designs
- The greyscale visualization tool applies a colormap to the surface of the 3D printed model representing the greyscale values from your image data – great for representing the bone density at critical parts of an orthopedic model
- Inspection tools allow color proofing (according to printers available) and a printability checker to help get the model right first time
- A series of specific and general surface formats are available to export your model seamlessly to your 3D printer (including *.stl, *.3mf, *.ply)

Split Regions Tool

- All new interface making adding and painting regions even easier
- New presets are available for the Ankle, Spine (Cervical, Lumbar and Thoracic), Heart, Hip, Knee, Maxillofacial, and Shoulder to speed up your segmentation

* Features available in Simpleware ScanIP Medical only



For more information on Simpleware Software, go to www.synopsys.com/simpleware

Email: simpleware@synopsys.com

Follow us: [Twitter](#) [LinkedIn](#) [Facebook](#) [YouTube](#)



SYNOPSYS[®]
Silicon to Software™

©2021 Synopsys, Inc. All rights reserved. Synopsys is a trademark of Synopsys, Inc. in the United States and other countries. A list of Synopsys trademarks is available at synopsys.com/copyright.html. All other names mentioned herein are trademarks or registered trademarks of their respective owners.
05/26/21.Simpleware-S-2021.06-LS-Letter.